

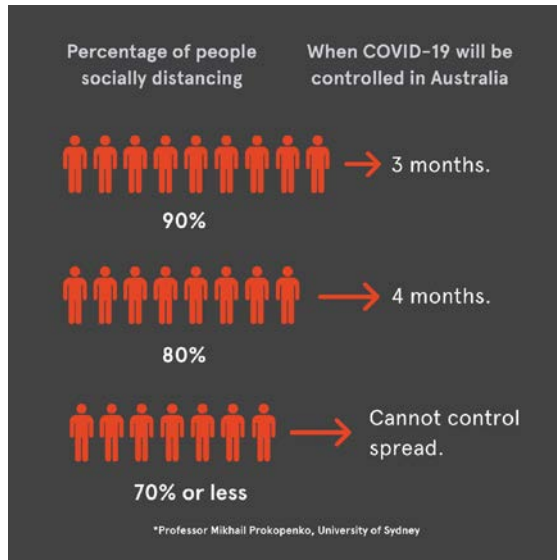
JHH UPDATE #15: COVID-19 SITUATION

17.4.2020

Dear Staff,

Current Situation

As of today (17th April 2020), JHH has 3 confirmed admitted patients with COVID-19.



Just a reminder that it is as important now as ever to maintain social distancing.

The success or failure of containing coronavirus relies on everyone following the official advice.

As you will have noticed at the entry points to the hospital, increased screening for staff and visitors is now in place with temperature checks and questions around potential for contact with a COVID-19 positive case.

Screening questions include:

1. Have you had any close contact with a COVID-19 positive case?
2. Have you had fever or respiratory like symptoms?
3. Do you have any flu-like symptoms?

You may notice that staff at the meet and greet stations will not be wearing masks, infection control have advised that this is not required to be worn on the meet and greet entry points due to the nature of the minimal contact between people.

These additional measures will help identify anyone who may require testing while also increasing current layers of protection for patients, their families and staff.

On behalf of the JHH Executive, I would like to take the opportunity to thank the staff manning the meet and greet screening stations, it is important to remember they are here for our safety, please make sure you share a friendly greeting and a smile when you see them.

If there is one message we all need to heed at this time,
It's be kind!

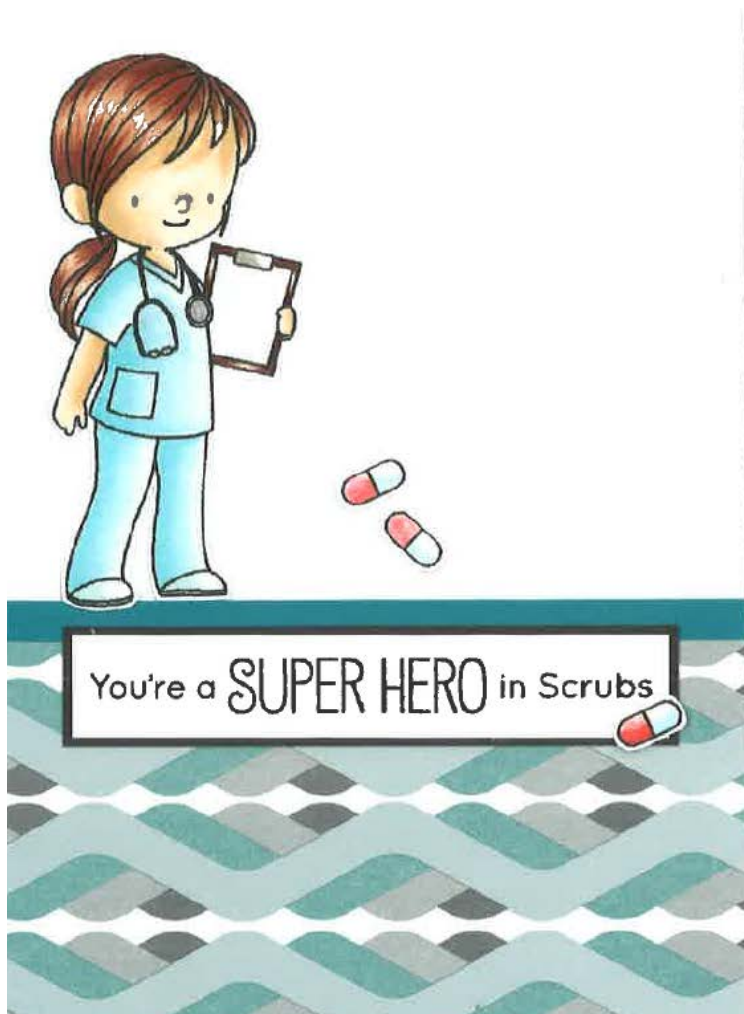
Here are some general reminders for protecting yourself:

- Avoid unnecessary face touching! Always clean your hands before touching the face.
- Adhere to the 5 Moments of Hand Hygiene standard - do the training!
- Make wearing eye protection a standard practice for every clinical care occasion.
- Make sure you have done the necessary PPE training
- Don't touch the front of a mask while it is worn. Discard it after a single use. Replace it when moist.
- Take particular care when removing PPE not to contaminate your eyes, nose or mouth. Ensure that you have cleaned your hands again as a last step before leaving the ward.
- Don't wear procedural or theatre scrubs and head gear outside of those zones.
- Never leave a COVID-9 zone wearing PPE. Do NOT wear a mask around the hospital corridors.
- Wear clean scrubs underneath your PPE for COVID19 patient care. At the end of your shift change, shower and put on clean clothes.
- Take responsibility for reducing clutter at shared ward desks and wipe these down several times daily including computer keyboards
- Ensure that you always eat and drink only in a suitable non-clinical area.

Staff Wellbeing

For a limited time, Newcastle based restaurant Subo is running a weekly draw for all health care workers at JHH to win a free SUBO at home experience by providing one lucky winner per week with an interactive three course meal from their delicious and interesting menu.

To enter, staff can register using this link: <https://mailchi.mp/841a74d183d9/suboathome>



To the staff of John Hunter
Hospital,

Thank you so much for
the work you are doing.

We appreciate your expertise,
your caring hearts and
most of all, the risks you
take every day.

The Lewis Family
Wyoming NSW

Leanne Johnson
General Manager
Incident Controller