



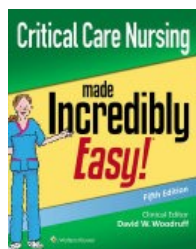
# HNE HEALTH LIBRARIES

linking evidence with practice

## Library Lore

The newsletter of [HNE Health Libraries](#)  
Vol 19(1) January-March 2023

Assist  
Search  
Evidence  
Orientate  
Manage  
Teach  
Research  
Train  
Motivate  
Access  
Supply  
Locate  
Support  
Help  
Appraise



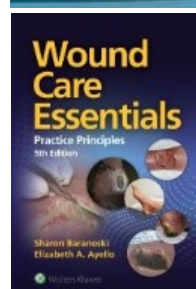
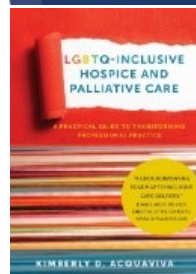
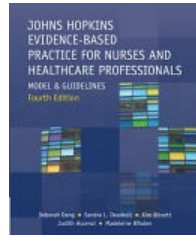
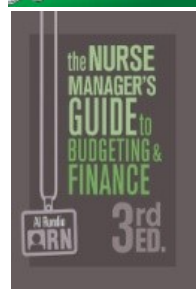
### EBSCO NURSING E-BOOK COLLECTION

The Library service is pleased to announce our recent purchase of the [EBSCO Nursing E-Book Subscription Collection](#).

The collection of over 800 ebooks has been carefully curated and includes 100+ Doody's Core Titles, with new titles added regularly. It offers unlimited user access with no turnaways – so you can always access that book you want, when you want it. From clinical guides, and evidence-based practice manuals, to practical handbooks and professional growth titles, the collection allows you to quickly find and access the information you need to provide outstanding patient care.

Topics include:

- Evidence-based nursing
- Nursing management
- Home care nursing
- Nursing research and theory
- Leadership
- Pharmacology



### ACCESSING LIBRARY RESOURCES

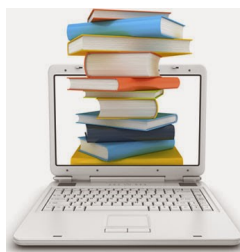
HNE Health Libraries members now have access to almost 1000 ebooks – in addition to those provided via CIAP. You can search for all of them using the 'eBooks' link (under "Quick Links") on the [Library website](#). Use your HNE Health Libraries membership no. (username) and password to gain access.

Unfortunately, due to the recent change in Library Services platform – ebooks are no longer displaying in the [Library catalogue](#). You can still use the catalogue to find [print](#) titles, but you need to use the 'eBooks' link on the [Library website](#) to search for titles available [electronically](#).

We realise having to search in two systems is annoying – and hope to get all our resources back together in the library catalogue very soon. We will keep you updated via the library website.

A lot of new titles were selected and requested by HNE staff.

So if there is a title you wish you could access— please [suggest a purchase](#), and we'll see if it fits within our guidelines.

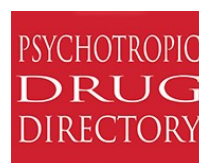


### WELCOME to LIBCHAT

The chatbox feature we recently introduced to [the Library website](#) to help you contact us directly during business hours is now easily accessible no matter what page of the website you are on. Look for the chat widget in the lower RHS of any page.

Feel free to use it for any of your library-related questions: opening hours, location details, renewing books, "how do I..?" Library staff are ready to offer support.

### PSYCHOTROPIC DRUG DIRECTORY



The most recent edition of the [Psychotropic Drug Directory](#) by Stephen Bazire is now available online for HNE staff. The title is a trusted source of advice and references on psychiatric drugs for practicing clinicians.

[Find out more...](#)

Access by logging in with your HNE Health Libraries membership no. (username) and password. You will be asked to register at the publisher site on first use only. This creates a bookshelf within their system and the directory will be automatically downloaded for a 24 hour period. If you need help accessing the directory—[please let us know...](#)

## POTS and PREGNANCY

Postural Orthostatic Tachycardia Syndrome (POTS) is a disorder of the autonomic nervous system most commonly affecting women of reproductive age. The purpose of this review is to summarize data from the available studies on the topic of pregnancy in POTS and common comorbid conditions and to provide the clinical recommendations regarding evaluation and treatment of POTS in pregnant women, based on the available studies and clinical experience. POTS is best managed by a multi-disciplinary team with knowledge of POTS and its various comorbidities. Clinicians should be aware of the clinical presentation, diagnostic criteria, and treatment options in pregnant women with POTS to optimize outcomes and improve medical care during pregnancy and post-partum period.

SOURCE: Kate Morgan, Angela Smith & Svetlana Blitshteyn (2022) [POTS and pregnancy: a review of literature and recommendations for evaluation and treatment](#). *International journal of womens health*, 14, 1831-1847

[Read now](#)

[Clinical obstetrics & gynaecology](#)



### NOW THERE'S MORE REASON TO SEARCH TRIP (PRO)

[Trip is a clinical search engine](#) designed to allow users to quickly and easily find and use high-quality research evidence to support practice. Trip designers have recently upgraded the user interface – limiting broken links – and improved the automation of how they import and filter ongoing clinical trials from [clinicaltrials.gov](#), and systematic reviews (both published, planned and ongoing) from all sources. So new reviews and trials are now added weekly. They are currently working to create a quality score for systematic reviews.

The Library Service has a paid subscription – so you will be automatically directed to the 'Pro' version when you search Trip on a networked PC. The PRO version offers extra functions and content. To access Trip (Pro) from home, first register with Trip from a networked PC. Find Trip towards the bottom of the 'Quick Links' list [on the Library homepage](#)

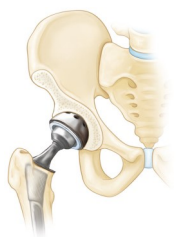
### EXPERT RECOMMENDATIONS for the provision of INFECTIVE ENDOCARDITIS SERVICES

Infective endocarditis (IE) remains a difficult condition to diagnose and treat and is an infection of high consequence for patients, causing long hospital stays, life-changing complications and high mortality. A new multidisciplinary, multiprofessional, British Society for Antimicrobial Chemotherapy (BSAC)-led Working Party was convened to undertake a focused systematic review of the literature and to update the previous BSAC guidelines relating delivery of services for patients with IE.

SOURCE: Sandoe, J. et al. (2023) [Expert consensus recommendations for the provision of infective endocarditis services: updated guidance from the Joint British Societies](#). *Heart*, published online Mar 10. doi: 10.1136/heartjnl-2022-321791



### JOINT REPLACEMENTS: SAFE to WAIT 10 YEARS for FOLLOW-UP?



People rarely develop problems after hip or knee replacements, and services struggle to follow-up everyone after surgery. So, many hospitals have either reduced or stopped follow-ups altogether. But there is little research into the safety of this practice. The authors of [this article](#) gathered information from previous research, national datasets, and from people with lived experience of joint replacements. They concluded that people with replacements recommended by [NICE](#) (UK) were unlikely to need follow-up within 10 years of surgery, as long as they were able to self-refer to rapid-access specialist orthopaedic care if they develop symptoms. [Read the evidence review...](#)



LOCAL RESEARCH



We are always looking for ways to better support our patrons – so here is your chance to let us know what you think. We're interested in your comments on all things Library-related – from accessibility of resources, to topics for the newsletter...

We're particularly interested in your use of RR3 (RNC). How often do you use it? What do you use it for? If the room was no longer available, where would you work? We will forward all comments on RR3 to both the JHH Executive and the JHHIP teams.

Please scan the QR code or [use this link](#) to provide feedback on all topics via the Library website.



SPEAK UP FOR TROVE

[Trove is Australia's national online portal](#) offering free, public access to more than 6 billion historical records that tell the story of Australia. Maybe you've used it to access maps, photos, archived reports, audio recordings, vintage cookbooks or newspapers... the variety is endlessly fascinating. Trove makes all of these resources freely available where they'd otherwise remain locked away on microfiche cassettes within compactus units in Canberra.

Trove is managed by the National Library of Australia (NLA) - but its future is in jeopardy. NLA only has funding to run Trove until July 2023, and unless they receive additional government support – they plan to close down the service.

[An official petition](#) was sent to the federal parliament in Canberra calling for funding to secure Trove's future. But the clock is ticking—so if you'd like to do more than wait and see what happens, you can find advocacy resources on the ALIA [Speak up for Trove](#) page.

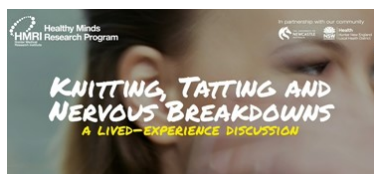
[AccessMedicine](#) offers full-text access to a huge range of essential texts – plus infographics; procedural, diagnostic and imaging videos (including biodigital anatomy); podcasts and quick reference resources to quickly refresh your knowledge of select disease states. You can search for specific titles by following the 'ebooks' link under ['Quick links' on the library website](#).

The full content of [Harrison's Principles of internal medicine](#) (21st ed.) is now online via AccessMedicine. Brand new chapters cover topics such as: AI and precision medicine; regulation and dysregulation of the immune system; and diagnostic errors and how to reduce them. Updates towards the next edition will flow automatically to the online version.

## Australia's first MULTICULTURAL MENTAL HEALTH LINE launched

People from diverse communities in NSW needing mental health support will now benefit from an Australian-first multicultural mental health phone line service covering up to 30 different languages. Available Monday to Friday from 9am to 4:30pm on 1800 648 911, the Transcultural Mental Health Line will support people to get the help they need, with a specialist team of health care professionals ready to provide care and connect people with the appropriate services. [Find out more...](#)

## HMRI MENTAL HEALTH SEMINAR: Discussion of lived-experience



HMRI Healthy Minds Research Program recently hosted a public community seminar on mental health. Author Alison Bryson shared her lived experience of nervous breakdown, recovery and how she keeps herself on track. The session also included a Q&A with Alison and a panel of HMRI Healthy Minds Research Program experts. [WATCH...](#)

[Knitting, tatting and nervous breakdowns](#)

**BORROW NOW**

## CHATGPT and the FUTURE

AI chatbots (think ChatGPT and Bing) have been in the news a lot lately, raising concerns about their impact on everything from teaching to research to publishing. ChatGPT is an artificial intelligence language model that can generate human-like text based on a given prompt. It is trained on a diverse array of sources from the internet and social media. But it doesn't look things up on the web to answer questions – it predicts which words are likely to go together in response to a prompt (based on its training). Of concern to students and researchers who might like to use the product, is that ChatGPT was not trained on academic literature. As a result, even when ChatGPT creates authentic looking citations – they largely end up being incorrect or false. [And when you call it out on lying about fake citations](#), it is not apologizing, it is just predicting that the words "I'm sorry" would be the most likely to occur in a response. [This article from the Scholarly Kitchen](#) discusses what AI chatbots can offer and where things are going...

## BioMedLM and BIOMEDICAL data

BioMedLM is a new, purpose-built AI model trained to interpret biomedical language. It was previously known as PubMed GPT – as the model was trained on PubMed abstracts. [This blog post](#) outlines the overall approach and results achieved so far. You can find additional analysis of the scientific results, as well as more information on how to access the model, [on this post from Stanford University...](#) Interestingly, [Trip has secured funding to explore the use of BioMedLM](#) with data specifically sourced from Trip's own databases.

## GREY LITERATURE

If you need to find health-related grey literature to inform systematic review or health technology assessments, but are unsure how and where to find it – have a look at this [recently updated chapter from Summarized Research in Information Retrieval for HTA](#). SuRe Info is an open access website that provides evidence-based information relating to the information retrieval aspects of producing systematic reviews and health technology assessments - including sources to search, designing search strategies, and documentation and reporting.



## NEW WEBSITE designed to help REDUCE the RISK of REPEAT STROKE



HMRI in partnership with the Stroke Foundation, recently launched a world-first website featuring evidence-based resources to help survivors of stroke move more and eat well to reduce the risk of a second stroke. The [i-REBOUND after stroke website](#) connects survivors of stroke to 'fit for purpose' resources from the comfort of their own home. A key feature of the project is an engaged group of stroke survivors who share hints and hacks, making the content reliable and relatable. [Find out more...](#)

## SCOPING REVIEW of TELEHEALTH use by INDIGENOUS POPULATIONS

This comprehensive review identified critical factors to guide the development of culturally-informed telehealth services to meet the needs of Indigenous people and to achieve equitable access and positive health outcomes.

SOURCE: Moecke, D. et al. (2023) [Scoping review of telehealth use by Indigenous populations from Australia, Canada, New Zealand, and the United States](#). *Journal of telemedicine and telecare*, published online Mar 13. doi: 10.1177/1357633X231158835

## HOW BAD is VAPING and SHOULD it be BANNED?



Vaping regularly makes headlines—with some campaigning to make e-cigarettes more available to help smokers quit—while others are keen to see vaping products banned, citing dangers, especially for teens. This recent evidence check of vaping research includes more than 100 sources on tobacco harm reduction, vaping prevalence and health effects, and what other countries are doing in response. So just how dangerous is it? [Find out in the Conversation...](#)





## LOCAL RESEARCH

### REVIEW: LUNG ULTRASOUND for DETECTION of FLUID OVERLOAD in PATIENTS on DIALYSIS

This review by a local author analyses current literature on the use of lung ultrasound in determining fluid overload in patients on dialysis, including its applicability to routine nursing practice. The literature demonstrated that lung ultrasound was superior in detecting lung congestion and fluid overload in comparison to standardized assessment and bioimpedance spectroscopy.

SOURCE: Meissner V. (2022) [The use of lung ultrasound for detection of fluid overload in patients on dialysis and its applicability to routine nursing practice: a literature review](#). *Nephrology nursing journal*, 49(5), 451–456

## LOCAL RESEARCH

Waller, A. et al. (2023) [Optimal care of people with brain cancer in the emergency department: a cross-sectional survey of outpatient perceptions](#). *Asia-Pacific journal of oncology nursing*, 10(3): 100194

Karran, E. et al. (2023) [Do health education initiatives assist socioeconomically disadvantaged populations? A systematic review & meta-analysis](#). *BMC public health*, 23: 453

King, K. et al. (2023) [Postinjury multiple organ failure in polytrauma: more frequent and potentially less deadly with less crystalloid](#). *European journal of trauma and emergency surgery*, published online Jan 4. doi: 10.1007/s00068-022-02202-8

Delaforce, A. et al. (2023) [Creating an implementation enhancement plan for a digital patient fall prevention platform using the CFIR-ERIC approach: a qualitative study](#). *International journal of environmental research and public health*, 20(5): 3794

Richardson, M. et al. (2023) [Genitourinary quality of life comparison between urethral sparing prostate SBRT monotherapy and virtual HDRB boost](#). *International journal of radiation oncology, biology, physics*, published online Mar 7. doi: 10.1016/j.ijrobp.2023.02.049

Diez, A. et al. (2023) [The clinical impact of flash glucose monitoring—a digital health app and smartwatch technology in patients with type 2 diabetes: scoping review](#). *JMIR diabetes*, 8: e42389

Doherty, E. et al. (2023) [Differential effectiveness of a practice change intervention to improve antenatal care addressing alcohol consumption during pregnancy: exploratory subgroup analyses within a randomised stepped-wedge controlled trial](#). *Midwifery*, 116: 103528

Find [MORE PUBLICATIONS](#) by HNEH authors on the Library website

### CVD risk factors in WOMEN with/without history of HDP



The aim of this local study was to understand the rates of modifiable risk factors for cardiovascular disease (CVD) among women with a history of hypertensive disorders of pregnancy (HDP), and assess whether they differ to women without a history of HDP.

SOURCE: Slater, K. et al. (2023) [Modifiable risk factors for CVD among women with and without a history of HDP](#). *Nutrients*, 15(2), 410

Read now

[50 studies every obstetrician-gynecologist should know](#)

### Targeted COMMUNITY programmes for CHILDREN'S mental health

This review aims to describe the types of targeted community-based mental health programmes evaluated in Australia to support children aged 1-9 years exhibiting internalising and/or externalising symptoms, and examine their impact.

SOURCE: Savaglio, M. et al. (2023) Targeted community-based programmes for children's mental health: a systematic review and meta-analysis of the Australian literature. *ANZ journal of psychiatry*, 57(2), 197–212

Available via CIAP—[Easy access using Library membership](#)

### The LIBRARY of AIR

The cooks from The Scholarly Kitchen regularly celebrate “non-standard” libraries—libraries of

[sound, colour, embalmed specimens](#), and [obsolete technologies](#)... This time they feature [a library of air...](#)



HNE HEALTH LIBRARIES  
linking evidence with practice

### HNE HEALTH LIBRARIES CAN...

- Help you ask the right questions
- Assist you in selecting the right sources of evidence
- Teach you how to effectively use a range of databases and other evidence-based resources
- Explain how to identify and critically appraise evidence

[CHECK OPENING HOURS](#)

[SEARCH THE CATALOGUE](#)

[RENEW YOUR LOANS](#)

[VIEW RECENT HNE HEALTH PUBLICATIONS](#)

While you can no longer visit us in person at many HNE Health sites, access to library services and resources are still available—via phone, email or by [visiting the website](#). We can also support your research, education and training needs via Teams or Zoom.

### CONTACT DETAILS:

#### TAMWORTH

UDRH Education Centre  
Tamworth Hospital  
Telephone: (02) 676 77986

E-mail: [HNELHD-TamworthLib@health.nsw.gov.au](mailto:HNELHD-TamworthLib@health.nsw.gov.au)

#### THE MATER

Level 4, Mental Health Admin Building.  
The Mater Hospital, Waratah  
Telephone: (02) 403 35075

E-mail: [HNELHD-MaterLibrary@health.nsw.gov.au](mailto:HNELHD-MaterLibrary@health.nsw.gov.au)

#### RNC (JHH)

(Popup space available for staff use in Resource Room 3)

Telephone: (02) 496 47158

E-mail: [HNELHD-Libraries@health.nsw.gov.au](mailto:HNELHD-Libraries@health.nsw.gov.au)