



# HNE HEALTH LIBRARIES

linking evidence with practice

## Library Lore

The newsletter of [HNE Health Libraries](#)  
Vol 18(8/10) August-October 2022

Assist  
Search  
Evidence  
Orientate  
Manage  
Teach  
Research  
Train  
Motivate  
Access  
Supply  
Locate  
Help  
Appraise  
Support



RNC ENTRANCE



LIBRARY



INSIDE RR3

### RESOURCE ROOM 3 NOW OPEN AT JOHN HUNTER HOSPITAL

A quiet space has opened in the RNC so that all staff on the JHH campus, can access PCs, a free desk and Library staff assistance with services and resources.

Resource Room 3 is open Monday-Friday from 8.30am-5pm. It is located on your left as you enter the RNC building. And as you can see from the photos, it's conveniently located so you can grab a cuppa before/after—or during your visit.

We now have a direct phone—so feel to ring us anytime 496 47158.

#### Need answers?

Welcome to LibChat!

Name (blank=anonymous)

Start Chat

#### WELCOME TO LibChat!

We recently introduced a new feature to [the Library website](#) to help you contact us directly during business hours. Look for our CHATBOX on the lower RHS of the page. Feel free to use it for any of your library-related questions: opening hours, location details, renewing books, "how do I..?" Library staff are ready to offer support.



## NEW EBOOKS ARE NOW AVAILABLE

The Library Service is continuing to add new titles to our available ebooks – so we can meet the needs of all Library users throughout Hunter New England—whether they have a local onsite branch or not. You will find a list of our latest purchases on the Library website under 'Resources' – [New resources](#)

You will also find them when searching for titles in the [Library catalogue](#). They will appear in your keyword – author – title searches. Look for the words: **"View full text for HNE Health only"** in a blue box in the middle of the screen, to ensure you have the right titles. Another way to find them, is by searching the 'Ebooks' link (under "Quick links") on the [library website](#).

Access to ebooks while onsite within HNEH is as easy as clicking a link. Remote access is available to HNEH Libraries members using their username (same as membership no.) / password. If you can't remember either of them—[you can reset your password using your email address](#). If you're not yet a library member—[just fill in the online form...](#)

We'll keep adding to the electronic titles in coming months. [So please let us know if you have title suggestions...](#) And please [contact us if you have any questions...](#)

## SUBMISSION TO URGE NLM TO UPDATE THEIR INDIGENOUS MESH TERM



Earlier in the year, a [statement was submitted to the US National Library of Medicine](#) to urge a change to the relevant MeSH term to better reflect Australia's Indigenous communities. We're pleased to note that NLM has made the requested changes and 'Australian Aboriginal and Torres Strait Islander Peoples' will become a MESH term from 2023. As a member of the HLA (Health Libraries Australia) Executive Committee - HNE Health Libraries' District Manager, Angela Smith was involved in the advocacy work surrounding the statement – and we're very proud of her achievement.

[View the MeSH 2023 preview...](#)

SOURCE: [Submission to urge NLM to update their indigenous MeSH term - HLA](#)

## REVIEW: MATERNAL DEATHS IN AUSTRALIA FROM RUPTURED SPLENIC ARTERY ANEURYSMS

The rupture of a splenic artery aneurysm in pregnancy is a highly lethal condition, but so rare, that most obstetricians would not encounter it during their career. This article by a local author reviews cases with the aim to raise awareness among clinicians of this potentially fatal condition.

### LOCAL RESEARCH

SOURCE: Gerald Lawson (2022) Maternal deaths in Australia from ruptured splenic artery aneurysms. [ANZ journal of obstetrics & gynaecology](#), 62(4), 466-471. Available via CIAP—[Easy access using Library membership](#)

Read now

FIND OUT WHAT ELSE  
YOU NEED TO KNOW IN  
OUR NEW EBOOK:  
[50 studies every obstetrician-gynecologist should know](#)

## GIVEAWAY—FREE BOOKS



We've just about finished weeding the collection at the Mater branch of HNE Libraries—removing older books that are no longer fit for purpose—but might spark your interest...

So get in quick and bag some great free titles, before they're all gone! We're open Monday-Friday from 8.30am-5.30pm.

Access GRAND ROUNDS presentations and EDUCATION sessions from your PC

HNE Health Libraries record and edit [Grand Round presentations](#) and [Departmental training / Education sessions](#) across a range of disciplines, delivered from sites all over the LHD.

We make them available on the Library website, so you can access them from your PC, at a time that suits you. Remote access to presentations is available to HNE Health Libraries members.



Our project, based on this work: **"Access all areas: Making your library service the first port(al) of call for health education"**, recently received special mention as a finalist in the 2022 HLA/ MedicalDirector Innovation Awards.

And Julia Gollan, Electronic Resources Librarian, will be presenting on the topic at the Health Libraries Australia (HLA) 2022 conference, in Sydney this week.

## FUNCTIONAL NEUROLOGICAL DISORDERS PRESENTATION

Dr Alexander Lehn (Neurologist, Brisbane Clinical Neuroscience Centre) will present "Functional Neurological Disorders" on behalf of the Dept of Neurology, JHH on Tues 22 Nov, 2.45-3.45pm in the RNC Lecture Theatre and via Zoom. Dr Lehn has a keen interest in Functional Neurological Disorders, and from 2015–2019 ran a dedicated clinic at Mater Hospital Brisbane, the first such clinic in Australia.

Zoom link: <https://uonewcastle.zoom.us/j/keILCFQvsR> (Passcode 399052)

**WATCH** previous recordings from the [Somatisation disorders forum](#) and updates from the SSD collaboration: [Lifting our game at JHH for somatic symptoms and related disorders](#) (Scroll to 13 Oct) on the Library website.

**BORROW:** [Deep brain stimulation for neurological disorders: theoretical background and clinical application](#) from the Library.



## THIS WAY UP ↑↑

*THIS WAY UP* is a trusted Australian provider of evidence-based, internet-delivered Cognitive Behavioural Therapy (iCBT) programs. They provide innovative, fun, and effective strategies for managing stress, anxiety and low mood.

As part of the stepped-care approach to treatment, clinicians can prescribe iCBT programs to their clients and stay informed of their progress. [You can find a comprehensive range of resources on their website](#), from ready-made handouts and worksheets, to guides on how you can make the most out of iCBT in your practice.

CONNECTING the DOTS: [Understanding the DFV experiences of CHILDREN and YOUNG people with DISABILITY](#)



Children with disability are known to experience violence at higher rates than children without disability. However,

little is known about how prevalent experiences of domestic and family violence (DFV) are among children with disability and the scope of potential harms this violence creates.

REPORT: [The nature and extent of domestic and family violence exposure for children and young people with disability](#)

FACT SHEET: [Connecting what matters: Children and young people with disability and their families share their views on how services can help when they experience domestic and family violence](#)

Read now

These new ebooks might also be of interest...

[The Royal Children's Hospital Melbourne Paediatric Handbook](#)

[Working with the developmental trauma of childhood neglect: using psychotherapy and attachment theory techniques in clinical practice](#)

[Basics of child neuropsychology](#)

LOCAL  
RESEARCH



## REVIEW: NURSING STUDENTS' CLINICAL placement EXPERIENCES

Clinical placement experience is closely linked to nursing students' decisions to withdraw from their nursing degrees. HNE Health Clinical Nurse Specialist, Diane Russ from Tablelands Mental Health Services completed an integrative review utilising Whittemore and Knafl's framework, and found that clinical placement support during the nursing degree was paramount to the student experience, with the type and level of support changing over time. Development of supportive relationships is critical to nursing students' sense of belonging and connectedness. The importance of familiarity and continuity of place may positively influence student attrition and transition into the workforce.

SOURCE: Diane Russ, Nicola Whiteing & Christina Aggar (2022) An integrative review of nursing students' clinical placement experiences throughout their nursing degrees. [Collegian](#), published online Jul 21. doi: 10.1016/j.colegn.2022.07.002  
Available via CIAP

## MEDICATION USE FOR SECONDARY PREVENTION AFTER CHD HOSPITALISATIONS



This project from the AIHW used the NIHSIAA dataset to explore factors that affect medication use among 67,800 Australians who were hospitalised for coronary heart disease. It found that younger patients and women were among those people less likely to be dispensed cardiovascular medicines and to still be taking them 1 year after leaving hospital.

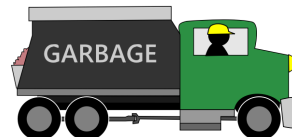
[Find out more...](#)

[Find other recent publications from AIHW...](#)

## THE TRASH LIBRARY OF ANKARA

Libraries take many forms, whether they are located in a [nuclear bunker](#) or a [salt mine](#), or their collection is made up of [sound recordings](#), [obsolete technologies](#), or [colours](#). This item from *The Scholarly Kitchen*, celebrates the sanitation workers of Ankara, who have taken it

upon themselves to launch a public library from the collection of books they've obtained from their work as garbage collectors. Even better, they plan to spread the joy of reading more broadly through Turkey, not [via camel as is the case in rural Pakistan](#), but instead [through a repurposed garbage truck...](#)



## SUGGESTIONS PLEASE...



The staff of HNE Health Libraries value your input. If you have ideas for topics, suggestions

for improvement or feedback, we'd love to hear from you. Please [email us](#).

## NEW ETHIC GUIDANCE FOR NATURE PUBLICATIONS AIMS TO ROOT OUT HARMFUL RESEARCH—BUT CAN IT SUCCEED?

Nature Portfolio (a subsidiary of the academic publishing giant Springer Nature), recently published [new ethics guidance for researchers](#). An [accompanying editorial](#) argues that for some research, "potential harms to the populations studied may outweigh the benefit of publication", and licenses editors to make such determinations. Editors may modify, amend or "correct" articles post-publication. They may also decline to publish, or retract, objectionable content or articles, such as "[s]exist, misogynistic and/or anti-LGBTQ+ content". [This article in the Conversation](#) considers possible repercussions...





## THE NEW ADHD GUIDELINE IS LIVE

The first-ever edition of the Australian Evidence-Based Clinical Practice Guideline for Attention Deficit Hyperactivity Disorder (ADHD) outlines a roadmap for ADHD clinical practice, research and policy, now and in the future, with a focus on everyday functioning and quality of life for people who are living with ADHD and their supporters.

[Download the Guideline, Summary of Recommendations and free factsheets...](#)

[Join this webinar on the 6th December](#), to hear experts from the Australian ADHD Professionals Association (AADPA) discuss what the new guidelines mean for clinical practice and for the over 1 million Australians who suffer from ADHD.

## LOCAL RESEARCH

Jamie Bryant, Amy Waller, Alison Bowman, Robert Pickles, Carolyn Hullick, Emma Price, Ben White, Lindy Willmott, Anne Knight, Mary -Ann Ryall & Rob Sanson-Fisher (2022) [Junior Medical Officers' knowledge of advance care directives and substitute decision making for people without decision making capacity: a cross sectional survey](#). *BMC medical ethics*, 23 (1), 74

Kristen McCarter, Amanda Baker, Luke Wolfenden, Chris Wratten, Judith Bauer, Alison Beck, Erin Forbes, Gregory Carter, Lucy Leigh, Christopher Oldmeadow & Ben Britton (2022) [Smoking and other health factors in patients with head and neck cancer](#). *Cancer epidemiology*, 79: 102202

Annika Ryan, Alison Luk Young, Jordan Tait, Kristen McCarter, Melissa McEnallay, Fiona Day, James McLennan, Catherine Segar, Gillian Blanchard, Laura Healey, Sandra Avery, Sarah White, Shalini Vinod, Linda Bradford & Christine Paul (2022) [Building staff capability, opportunity, and motivation to provide smoking cessation to people with cancer in Australian cancer treatment centres: development of an implementation intervention framework for the Care to Quit cluster randomised controlled trial](#). *Health services & outcomes research methodology*, published online Sep 28. doi: 10.1007/s10742-022-00288-6

Clinton Smith, Sanjiv Gupta, Yaw Sinn Chin & Stephen Thompson (2022) Long term outcomes of gastric mucosa-associated lymphoid tissue lymphoma treated with radiotherapy: a multi-center retrospective cohort study. *Hematological oncology*, published online Sep 23. doi: 10.1002/hon.3078  
**Available via CIAP—Easy access using Library membership**

Shriram Swaminathan & Bobby Chacko (2022) ['A disease of disparity': chronic kidney disease of unknown aetiology in endemic immigrant communities](#). *Internal medicine journal*, 52(8), 1437–1440

Katie McGill, Amir Salem, Tanya Hanstock, Todd Heard, Leonie Garvey, Bernard Leckning, Ian Whyte, Andrew Page & Greg Carter (2022) [Indigeneity and likelihood of discharge to psychiatric hospital in an Australian deliberate self-poisoning hospital-treated cohort](#). *International journal of environmental research and public health*, 19(19), 12238

Maria Sammut, Kirsti Haracz, David Shakespeare, Coralie English, Gary Crowfoot, Natalie Fini, Michael Nilsson & Heidi Janssen (2022) [Physical activity after transient ischemic attack or mild stroke is business as usual](#). *Journal of neurologic physical therapy*, 46(3), 189–197

Thomas Giles, Natasha Weaver, Adrian Varghese, Teagan Way, Christian Abel, Peter Choi & Zsolt Balogh (2022) [Acute kidney injury development in polytrauma and the safety of early repeated contrast studies: a retrospective cohort study](#). *Journal of trauma and acute care surgery*, published online Jul 7. doi: 10.1097/TA.0000000000003735

Emily Cooney, Carla Walton & Sharleen Gonzalez (2022) [Getting DBT online down under: The experience of Australian and New Zealand Dialectical Behaviour Therapy programmes during the Covid-19 pandemic](#). *PLoS ONE*, 17(10): e0275636

Nicholas Blefari, Christopher Rowe, Elvina Wiadji, David Lambkin, Rosemary Carroll, Elizabeth Fradgley & Christine O'Neill (2022) [Long-term health-related quality of life outcomes following thyroid surgery for malignant or benign disease: deficits persist in cancer survivors beyond five years](#). *World journal of surgery*, 46, 2423–2432



**Black Dog  
Institute**

## TURNING THE TIDE ON DEPRESSION

[This recent report from the Black Dog Institute](#) looks at how childhood, adolescence and young adulthood have changed over the past two decades, and how social factors may be increasing young people's risks for depression.

**Read now**

FIND OUT MORE on the [Neuropsychology of depression](#) in our new ebook. It includes a chapter by Martin, Moffa & Nikolin (Uni of NSW) on Transcranial Direct Current Stimulation and another by Jerome Sarris (NICM Health Research Institute, Westmead) on nutraceuticals.



**HNE HEALTH  
LIBRARIES**  
linking evidence with practice

## HNE HEALTH LIBRARIES CAN...

- Help you ask the right questions
- Assist you in selecting the right sources of evidence
- Teach you how to effectively use a range of databases and other evidence-based resources
- Explain how to identify and critically appraise evidence

CHECK [OPENING HOURS](#)

SEARCH [THE CATALOGUE](#)

RENEW [YOUR LOANS](#)

VIEW RECENT [HNE HEALTH PUBLICATIONS](#)

While you can no longer visit us in person at many HNE Health sites, access to library services and resources are still available—via phone, email or by [visiting the website](#). We can also support your research, education and training needs via Teams or Zoom.

## CONTACT DETAILS:

### TAMWORTH

UDRH Education Centre  
Tamworth Hospital  
Telephone: (02) 676 77986  
E-mail: [HNELHD-](mailto:HNELHD-)

[TamworthLib@health.nsw.gov.au](mailto:TamworthLib@health.nsw.gov.au)

### THE MATER

Level 4, Mental Health Admin Building.  
The Mater Hospital, Waratah  
Telephone: (02) 403 35075  
E-mail: [HNELHD-](mailto:HNELHD-)  
[MaterLibrary@health.nsw.gov.au](mailto:MaterLibrary@health.nsw.gov.au)

### RNC (JHH)

("Quiet space" available for staff use in Resource Room 3)

Telephone: (02) 496 47158

E-mail: [HNELHD-](mailto:HNELHD-)  
[Libraries@health.nsw.gov.au](mailto:Libraries@health.nsw.gov.au)