



HNE HEALTH LIBRARIES

linking evidence with practice

Assist Search Orientate Manage Appraise Research Train
Motivate Evidence Support Help
Access Supply Locate

Library Lore

The newsletter of [HNE Health Libraries](#)
Vol 16(7) July 2020

REDUCING SURGICAL SITE INFECTIONS POST-CAESAREAN SECTION IN AN AUSTRALIAN HOSPITAL, USING A BUNDLED CARE APPROACH

This pilot pre-post intervention study carried out at Tamworth Rural Referral Hospital, developed, implemented and assessed an evidence-based Caesarean Infection Prevention ("CIP") bundled intervention to reduce post-Caesarean section surgical site infection (CS SSI) rates in a high risk population.



L-R: DR MELISSA PRICE-PURNELL (RMO-INVESTIGATOR), DR LILACH LEIBENSON (AUTHOR), MICHELLE BOLTE (CNC INFECTION PREVENTION-AUTHOR) and TRACEY WALKER (CNE OPERATING THEATRES)

TAMWORTH RURAL REFERRAL HOSPITAL and MIDWIFERY RESEARCH CENTRE

A total of 710 procedures were monitored with 346 and 364 women in the pre and post-intervention groups respectively. Post-CS SSI rates significantly reduced post-intervention, the greatest benefit in class II and III obese patients. Higher hypertension rates and lower maternal mean age were seen in patients with SSI. The findings substantiate the need for development and evaluation of multifaceted, evidenced-based interventions to reduce post-CS SSIs.

SOURCE: Michelle Bolte, Blake Knapman, Lilach Leibenson, Jean Ball & Michelle Giles (2020) Reducing surgical site infections post-caesarean section in an Australian hospital, using a bundled care approach. *Infection, disease & health*, 25(3), 158-167

[Contact HNE Health Libraries to access full text](#) (Library membership required)

ASYMPTOMATIC COVID-19 OR ARE WE MISSING SOMETHING?

A closer review of the asymptomatic COVID-19 cases recorded during the first pandemic wave in the Hunter New England area found that seven of the 26 'asymptomatic' patients actually had experienced COVID-19-like symptoms, with five reporting symptoms prior to testing on review of all available clinical records. There is a need to delve deeper into the symptom history of 'asymptomatic' cases than initially recommended in national guidelines.

SOURCE: Jazmin Daniells, Helen MacCallum & David Durrheim (2020) [Asymptomatic COVID-19 or are we missing something?](#) *Communicable diseases intelligence*, 44

HNE POPULATION HEALTH

HAVE YOU TRIED THESE ONLINE RESOURCES?

We hope you're familiar with many of the specialist resources provided by HNE Health Libraries, such as ACCESSSS Smart Search, or TRIP... But did you know you can access [a wealth of other online resources](#) via the Library website?

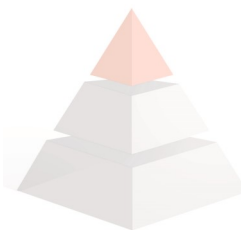
[Stahl online](#)

provides access to the entire current Cambridge portfolio of



books by Stephen Stahl. A one-stop shop, covering everything you will ever need to know about neuropsychopharmacology.

Have you tried ALL of the online resources provided by HNE Health Libraries? Find them on the [library website](#) under 'Quick Links'.



You will need a current HNE Health Libraries' USERNAME / PASSWORD to access online resources.

Username = Membership No.

[But I can't remember them!](#)

If you're not yet a library member?

[Fill in the online form](#) or visit your [local HNE Health Library](#).

EMBEDDING A SPECIALIST PREVENTIVE CARE CLINICIAN IN A COMMUNITY MENTAL HEALTH SERVICE INCREASES PREVENTIVE CARE PROVISION

Clinical practice guidelines recommend that community mental health services provide preventive care (assessment, advice and referral) for clients' chronic disease risk behaviours (smoking, poor nutrition, alcohol overconsumption and physical inactivity); however, such care is often not routinely provided.

Analyses from this randomised controlled trial study undertaken in a local community mental health service indicated significantly greater increases in 12 of the 18 preventive care delivery outcomes in the intervention compared to the usual care condition from baseline to follow-up, when clients (n=811) were offered an additional consultation with a specialist clinician embedded within a community mental health service. Participants reported high levels of satisfaction with preventive care received, ranging from 77% (assessment) to 87% (referral), with no significant differences between conditions.

SOURCE: Caitlin Fehily, Kate Bartlem, John Wiggers, Paula Wye, Richard Clancy, David Castle, Andrew Wilson, Chris Rissel, Sonia Wutzke, Rebecca Hodder, Kim Colyvas, Fionna Murphy, Jenny Bowman (2020) [Effectiveness of embedding a specialist preventive care clinician in a community mental health service in increasing preventive care provision: a randomised controlled trial](#). *Australian & New Zealand journal of psychiatry*, 54(6), 620–632

ALSO: Fehily, C. et al. (2020) [An economic evaluation of a specialist preventive care clinician in a community mental health service: a randomised controlled trial](#). *BMC health services research*, 20: 405

AND: Fehily, C. et al. (2020) [Uptake of a preventive care consultation offered to clients of a community mental health service](#). *Preventive medicine reports*, 18: 101076

AIHW: AUSTRALIA'S HEALTH 2020

2 in 3 (67%) adults were overweight or obese in 2017-18

Life expectancy, chronic conditions, social determinants of

health and the COVID-19 pandemic are some of the issues under the spotlight in the [latest AIHW report](#) on the health of Australians.

A GRIM VINDICATION FOR EXPERTS WHO STUDY CORONAVIRUSES

The now prophetic words could be found buried at the end of a [research paper](#) published in *Clinical microbiology reviews* in October 2007: "The presence of a large reservoir of SARS-CoV-like viruses in horseshoe bats, together with the culture of eating exotic animals in southern China, is a time bomb."

The warning — made nearly 13 years ago and more than 4 years after a worrying first wave of severe acute respiratory syndrome, or SARS, killed nearly 800 people globally — was among the earliest to predict the emergence of something like SARS-CoV-2, the virus behind the current pandemic of COVID-19.

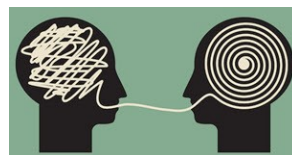


[Read more in MJA Insight+...](#)

PATHOGENIC LANGUAGE in PSYCHIATRY and how to COMBAT IT

Psychiatrists are occasionally susceptible to using dehumanising terms in their clinical practice, which arguably harms patients and their families. The authors have identified several terms that are ostensibly pathogenic, tried to illuminate their intrinsic features, and devised guidelines to stem their use.

SOURCE: Bloch, S. & Haslam, N. (2020) [Pathogenic language in](#)



[psychiatric practice and how to combat it](#). *Australasian psychiatry*, published online Jun 17. doi: 10.1177/1039856220933342

FAMILIES IN AUSTRALIA SURVEY: LIFE DURING COVID-19

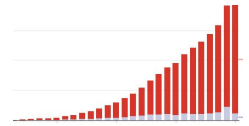


[The Life during COVID-19 survey](#) ran from May 1 to June 9 2020 and had 7,306 participants

from around Australia. It was the first survey in the *Families in Australia* survey series. The aim was to understand how Australian families coped with the COVID-19 pandemic, one of the greatest health, social and economic challenges in history.

3 QUESTIONS TO ASK NEXT TIME YOU SEE A GRAPH, CHART OR MAP

Whether they show COVID-19 cases, global warming trends,



or utility usage, being able to correctly assess and interpret figures allows you to make informed decisions. Unfortunately, not all figures are created equal. If you can spot a figure's pitfalls you can avoid the bad ones. Consider the following three key questions the next time you see a graph, map or other data visual so you can confidently decide what to do with that new nugget of information.

[Read more in The Conversation...](#)

LOCAL RESEARCHERS: DRUG REPURPOSING IN THE ERA OF COVID-19

Drug repurposing represents an appropriate alternative strategy in the current era, reducing development time and costs compared with de novo drug discovery and development. In simple terms, it involves identifying new uses for approved or investigational drugs that are outside the scope of the original intended or approved medical use. Provision of these compounds to patients can be through compassionate use or clinical trials, which in the setting of the current pandemic raises many ethical questions.

SOURCE: Jennifer Martin and Nikola Bowden (2020) [Drug repurposing in the era of COVID-19: a call for leadership and government investment](#). *MJA*, 212(10), 450-452.e1

WORKPLACE EXPERIENCES OF MENTAL HEALTH CONSUMER PEER WORKERS IN NSW

This Australian study demonstrates that while consumer peer workers do not appear to experience poorer job satisfaction, higher levels of burnout or turnover intention, than other mental health workers, a range of challenges do exist. Efforts to further expand the peer workforce (especially senior peer worker roles), and promote more positive attitudes and workplace cultures, are likely to promote better workplace experiences for peer workers.

SOURCE: Scanlan, J. et al. (2020) [Workplace experiences of mental health consumer peer workers in NSW, Australia: a survey study exploring job satisfaction, burnout and turnover intention](#). *BMC Psychiatry*, 20: 270

INJECTIONS ARE TWO-AND-A-HALF TIMES SAFER WHEN NURSES USE REVAMPED GUIDELINES

The UK's National Health Service (NHS) is changing the way it writes its guidelines for giving injections in hospitals, following new research from



the University of Bath. The study found that hospital nurses make far fewer mistakes when administering medicines intravenously if they follow instructions written with nurses in mind. Current NHS guidelines on intravenous injections are written by pharmacists with little input from their primary audience - nurses. These instructions can be confusing or overly complicated, which contributes to 30-50% of intravenous doses being incorrect in some way. Researchers used a process called 'user testing', which identifies where mistakes are being made and introduces changes so the instructions are easier to use. [Read more...](#)

SOURCE: Jones, M. et al. (2020) [User-testing guidelines to improve the safety of intravenous medicines administration: a randomised in situ simulation study](#). *BMJ quality & safety*, published online Jun 30. doi: 10.1136/bmjqs-2020-010884

ALSO: Jones, M. et al. (2020) [User testing to improve retrieval and comprehension of information in guidelines to improve medicines safety](#). *Journal of patient safety*, published online Jun 19. doi: 10.1097/PTS.0000000000000723

Dr Matthew Jones [talks about his research...](#)

DIETARY INTAKE of SODIUM DURING INFANCY and CARDIOVASCULAR CONSEQUENCES LATER in LIFE



A scoping review of 25 articles indicated that high sodium intake in the first 6 months after birth may lead to negative health effects such as higher blood pressure, due to factors like salty taste preference and alterations of the renal system.

SOURCE: Emmerik, N. et al. (2020) [Dietary intake of sodium during infancy and the cardiovascular consequences later in life: a scoping review](#). *Annals of nutrition & metabolism*, 76(2), 114-121

[Link works with MS Edge](#)

SYSTEMATIC RAPID EVIDENCE SYNTHESIS: CAN FEEDBACK APPROACHES REDUCE UNWARRANTED CLINICAL VARIATION?

This rapid review and narrative evidence synthesis was undertaken as a policy-focused review to understand how feedback approaches have been applied to specifically address unwarranted clinical variation.

Providing feedback to clinicians was identified, in a range of a settings, as associated with changes in variation such as reducing overuse of tests and treatments, reducing variations in optimal patient clinical outcomes and increasing guideline or protocol adherence.

SOURCE: Reema Harrison, Reece Amr Hinchcliff, Elizabeth Manias, **Steven Mears**, David Heslop, Victoria Walton & Ru Kwedza (2020) [Can feedback approaches reduce unwarranted clinical variation? A systematic rapid evidence synthesis](#). *BMC health services research*, 20(1), 40

ALSO: Ashfaq Chauhan, Merrilyn Walton, Elizabeth Manias, Ramesh Lahiru Walpola, Holly Seale, Monika Latanik, Desiree Leone, **Stephen Mears** and Reema Harrison (2020) [The safety of health care for ethnic minority patients: a systematic review](#). *International journal for equity in health*, 19(1), 118

AND: Reema Harrison, Elizabeth Manias, **Stephen Mears**, David Heslop, Reece Hinchcliff, Liz Hay (2019) [Addressing unwarranted clinical variation: a rapid review of current evidence](#). *Journal of evaluation in clinical practice*, 25(1), 53-65

[Links work with MS Edge](#)

“Librarian co-authors correlated with higher quality reported search strategies in general internal medicine systematic reviews.”



DECISION AIDS QUICKLY and ACCURATELY RULE OUT HEART ATTACK

Decision aids – based on a single blood test – accurately ruled out heart attacks in almost half of all patients with relevant symptoms arriving at UK emergency departments. The aids could provide early reassurance for worried patients and families and avoid many unnecessary hospital admissions.

The study published in *Emergency Medicine Journal*, was the first direct comparison of four decision aids used to decide which patients with symptoms of a possible heart attack need further tests. It found that the Troponin-only Manchester Acute Coronary Syndromes (T-MACS) and the Emergency Department Assessment of Chest Pain (EDACS) decision aids were the most accurate. [Read more in NIHR Evidence...](#)

SOURCE: Body, R. et al. (2020) [Comparison of four decision aids for the early diagnosis of acute coronary syndromes in the emergency department](#). *Emergency medicine journal*, 37(1), 8-13

[Link works with MS Edge](#)



STEVE MEARS
DISTRICT MANAGER,
HNE HEALTH LIBRARIES

WANT TO IMPROVE YOUR REVIEW? WE CAN HELP

HNE Health Librarians have contributed to many recent reviews (literature, rapid, systematic...) on key health issues. We can improve your review by being part of your research team. Are you taking full advantage of this valuable staff resource?

[Find out more on our website](#) or [contact HNE Health Libraries](#)

THERAPISTS and PATIENTS have GOOD QUALITY INTERACTIONS during TELEPHONE SESSIONS



A review of the evidence (15 papers) found little difference in the interaction regardless of how therapy was delivered. Telephone sessions were shorter, but measures such as empathy and attentiveness, as well as patients' readiness to disclose information, was similar in both telephone-delivered and face-to-face therapy. The findings could provide reassurance to therapists during the current pandemic. [Read NIHR review...](#)

SOURCE: Irvine, A. et al. (2020) [Are there interactional differences between telephone and face-to-face therapy? A systematic review of comparative studies](#). *Journal of affective disorders*, 265, 120-131 [Link works with MS Edge](#)

GET TO KNOW HELEN EDWARDS, RESOURCES LIBRARIAN WITH HNE HEALTH LIBRARIES...

Did you always want to work in a library? No, I worked in the education sector first. After having my children I decided to retrain as a teacher/ librarian. The course required compulsory work experience in a different library environment and I was lucky enough to do this at the John Hunter Hospital library and enjoyed it immensely so I never left.

Best part of the job? Being part of a team committed to providing health professionals with up to date quality resources to support clinical decision making, research, and continuing education by ensuring access to the best evidence based information for patient care.

Do you have a favourite...?

Movie: 'The Big Lebowski,' a wonderful Cohen Bros film and Johnny Cash's story 'Walk the Line'

TV show: I mostly watch streamed television shows like thrillers and police dramas

Book: Love a good crime series from authors like Adrian McKinty, Michael Connelly, Robert Galbraith and Jane Harper

Music: I haven't moved on from the 'classic rock' era

What do you like to do when you're not working for HNE Health Libraries? Reading the Saturday papers with a home brewed coffee and challenging myself with the weekly quiz.

Place/s I most enjoyed travelling to...? I generally like visiting new places but would go back to France and the Kimberly region tomorrow!



DOGGEDLY PURSUING PREDATORY JOURNALS

Popular "academic" Dr Olivia Doll (also known as Ollie, the Staffordshire terrier) who sits on the editorial boards of seven international medical journals, has published [an entertaining new article](#) (*link works with MS Edge*). Founded on the success of random breath testing (RBT), she proposes a pilot project to identify whether the RBT system can also be used for prostate cancer screening. Ollie's owner, veteran public health expert Mike Daube, has created many articles for Dr Doll as a means to test how carefully journals scrutinise their editorial reviewers. He is concerned that despite the criticisms and exposés, predatory journals continue unconstrained.

[Read more in MJA Insight+...](#)



If you aren't sure whether a journal is predatory, visit [Think](#). [Check](#). [Submit](#). The site offers a range of

tools and practical resources to help you identify trusted journals and publishers for your research.

QUICK REVIEW: NON-INVASIVE FETAL ECG (NI-fECG) DURING LABOUR

Compared with Doppler ultrasound, NI-fECG performed equal or better for fetal monitoring during labour in 8 included studies. It is a non-invasive, patient-friendly technique.

SOURCE: Lempersz, C. et al. (2020) [The noninvasive fetal electrocardiogram during labor: a review of the literature](#). *Obstetrical & gynecological survey*, 75(6), 369-380

RECENT ARTICLES BY LOCAL AUTHORS

Kristen McCarter, Elizabeth Fradgley, Ben Britton, Jordan Tait & Christine Paul (2020) [Not seeing the forest for the trees](#). *Current opinion in supportive and palliative care*, published online Jul 10. doi: 10.1097/SPC.0000000000000513

CONSULTATION-LIAISON PSYCHIATRY, JHH

Shannon Cooper, Cino Bendinelli, Andrew Bivard, Mark Parsons & Zsolt Balogh (2020) [Abnormalities on perfusion CT and intervention for intracranial hypertension in severe traumatic brain injury](#). *Journal of clinical medicine*, 9(6), 2000

DEPT OF TRAUMATOLOGY, JHH

Seth Tarrant, Micheal Catanach, Mahsa Sarrami, Matthew Clapham, John Attia, & Zsolt Balogh (2020) [Direct oral anticoagulants and timing of hip fracture surgery](#). *Journal of clinical medicine*, 9(7), 2200

ORTHOPAEDIC CLINICS, TMH

Joanna Mesure and Nathan Ryder (2020) [Outreach services to brothels facilitate sexually transmissible infection testing for Asian sex workers in regional Australia](#). *Sexual health*, 17(3), 301-302 * Abstract only available

HNE SEXUAL HEALTH



HNE HEALTH LIBRARIES CAN...

- Help you ask the right questions
- Assist you in selecting the right sources of evidence
- Teach you how to effectively use a range of databases and other evidence-based resources
- Assist you to identify and critically appraise evidence

CHECK [OPENING HOURS](#)

SEARCH [THE CATALOGUE](#)

RENEW [YOUR LOANS](#)

RECENT [HNE HEALTH PUBLICATIONS](#)

CONTACT DETAILS

ARMIDALE—Dr Harold Royle Library
Armidale Hospital

Telephone: (02) 6776 9724

E-mail: Nina.Sithakam@health.nsw.gov.au

BELMONT—Level B (lower ground floor)
Belmont District Hospital

Telephone: (02) 4923 2192

E-mail: HNELHD-Libraries@health.nsw.gov.au

CESSNOCK—Level 1, Administration Block,
Cessnock Hospital

Telephone: (02) 4991 0315

E-mail: HNELHD-Libraries@health.nsw.gov.au

JOHN HUNTER—Level 1, E Block,
John Hunter Hospital

Telephone: (02) 4921 3778

E-mail: HNELHD-Libraries@health.nsw.gov.au

MAITLAND—Level 3, Education Centre
The Maitland Hospital

Telephone: (02) 4939 2405

E-mail: HNELHD-Libraries@health.nsw.gov.au

TAMWORTH—UDRH Education Centre
Tamworth Hospital

Telephone: (02) 6767 7985

E-mail: HNELHD-TamworthLib@health.nsw.gov.au

TAREE (MANNING)—Library

Manning Rural Referral Hospital, Taree

Telephone: (02) 6592 9352

E-mail: Sue.DeSouza@health.nsw.gov.au

THE MATER—Level 4, Mental Health Admin
Building. The Mater Hospital, Waratah

Telephone: (02) 4033 5075

E-mail: HNELHD-MaterLibrary@health.nsw.gov.au